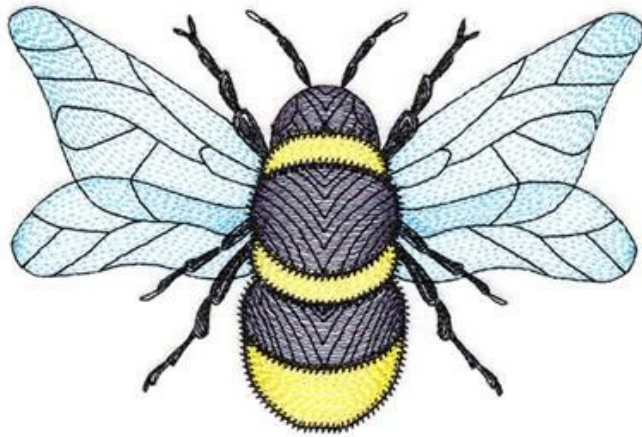


Thread List



just bee

Design Name: Just Bee (UT22301)

Size: 5.83"w x 5.87"h (148 x 149mm)

Stitches: 12057

All thread numbers are Madeira rayon, 40 wt.

Thread Order:

- 1 Clear Blue #1132 wings
- 2 Twister #1164 bee body details
- 3 Daisy #1083 bee body details
- 4 Emerald Black #1000 bee linework
- 5 Emerald Black #1000 text

Threads Used:

- Clear Blue #1132
- Twister #1164
- Daisy #1083
- Emerald Black #1000

