

Face Mask

Size: Large

www.urbanthreads.com

Print Scaled to 100%

UT Face Mask  
Size: Large

Left 1/2 of Mask  
Tape together and then cut:  
Cut 1 - Outer fabric  
Cut 1 - Lining Fabric

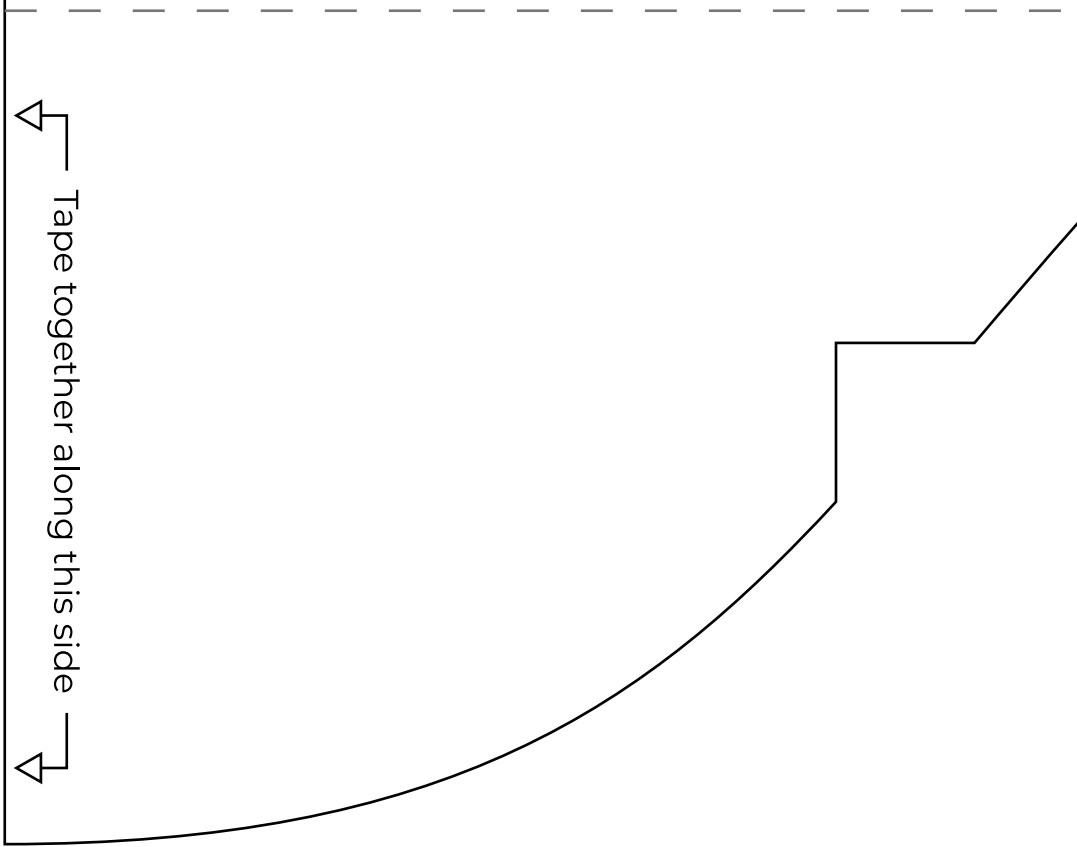
Tape together along this side

Please check the scale  
here after printing

This should be 2in wide

UT Face Mask  
Size: Large

Right 1/2 of Mask  
Tape to left 1/2 of mask



Please check the scale  
here after printing

This should be 2in wide

UT Face Mask  
Size: Large

Max embroidery area  
Cut 1 - out of paper

Will fit embroidery designs:  
6.4706" wide x 2.75" tall  
and smaller

UT Face Mask  
Size: Large

Wire Pocket  
Cut 1 - lining fabric

Please check the scale  
here after printing

This should be 2in wide